



OPTIX PLUS

WIPER BLADE INSTALLATION INSTRUCTIONS

WARNING: Failure to properly install wiper blades may cause the blades to not work properly or detach. Follow all instructions carefully and use only the correct adapter for your vehicle. After installation, check to ensure the blades are securely attached.



Scan for PEAK® wiper blade product information and installation videos or visit PEAKauto.com

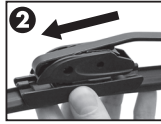
Identify your vehicle's wiper arm and follow the instructions. Remember to remove the plastic rubber protector before installation.



HOOK



1. Position the wiper blade parallel to the wiper arm.



2. Pull the blade into the wiper arm hook.



3. Continue to pull pass the front adapter tabs until you hear the blade lock into place. After installation, tug firmly on the blade to ensure it is securely attached.

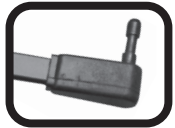
PEAK® Optix® Plus features an EZCHECK™ Wear Indicator that tells you when to change your blades.



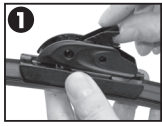
Remove sticker to activate the wear indicator.



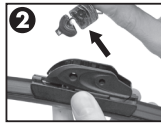
When the wear indicator turns yellow, it's time to replace your wiper blades.



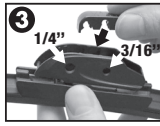
**SIDE LOCK
1/4" & 3/16"**



1. Lift up the back of the pre-attached adapter.



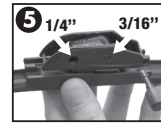
2. Pull out adapter to remove and discard.



3. Align the "F3" adapter with the corresponding hole size on the coupler.



4. Snap down the "F3" adapter onto the plastic pin in the blade.



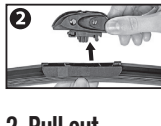
5. Insert wiper arm into the correct size hole in wiper frame until it locks in place.



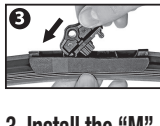
PINCH TAB



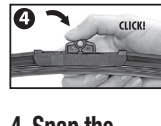
1. Lift up the back of the pre-attached adapter.



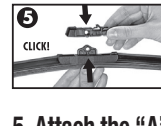
2. Pull out adapter to remove and discard.



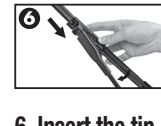
3. Install the "M" adapter by aligning the arrow on the adapter with the arrow on the base of the wiper blade.



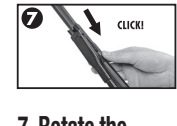
4. Snap the adapter down in the back to engage onto the base.



5. Attach the "A" adapter onto the "M" adapter.



6. Insert the tip of the wiper arm into the front of the adapter.



7. Rotate the blade into the wiper arm until the tabs in the back of the adapter lock into the wiper arm.

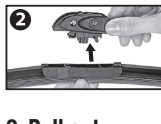
To determine the size of your Push Button wiper arm, use a penny or ruler below to measure. A penny will fit firmly into the end of the 22mm wiper arm but will not fit into the end of the 19mm wiper arm.



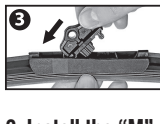
**PUSH BUTTON
(22mm)**



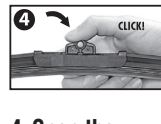
1. Lift up the back of the pre-attached adapter.



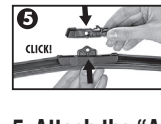
2. Pull out adapter to remove and discard.



3. Install the "M" adapter by aligning the arrow on the adapter with the arrow on the base of the wiper blade.



4. Snap the adapter down in the back to engage onto the base.



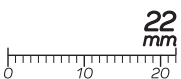
5. Attach the "A" adapter onto the "M" adapter.



6. Insert the back end of the adapter into the wiper arm opening.



7. The button in the middle of the adapter must lock into the hole in the top of the wiper arm.



**PRODUCT QUESTIONS OR COMMENTS CONTACT TECHNICAL SUPPORT:
(800) 477-5847 • owitech@owi.com**



OPTIX PLUS

WIPER BLADE INSTALLATION INSTRUCTIONS

WARNING: Failure to properly install wiper blades may cause the blades to not work properly or detach. Follow all instructions carefully and use only the correct adapter for your vehicle. After installation, check to ensure the blades are securely attached.



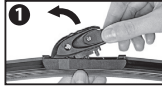
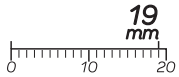
Scan for PEAK® wiper blade product information and installation videos or visit PEAKauto.com

Identify your vehicle's wiper arm and follow the instructions. Remember to remove the plastic rubber protector before installation.

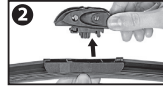
To determine the size of your Push Button wiper arm, use a penny or ruler below to measure. A penny will fit firmly into the end of the 22mm wiper arm but will not fit into the end of the 19mm wiper arm.



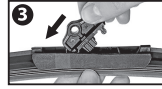
PUSH BUTTON (19mm)



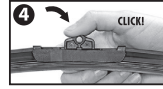
1. Lift up the back of the pre-attached adapter.



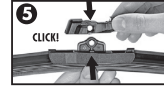
2. Pull out adapter to remove and discard.



3. Install the "M" adapter by aligning the arrow on the adapter with the arrow on the base of the wiper blade.



4. Snap the adapter down in the back to engage onto the base.



5. Attach the "B" adapter onto the "M" adapter.



6. Insert the button in the middle of the adapter into the wiper arm opening.

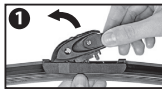
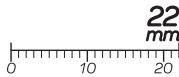


7. The button in the middle of the adapter must lock into the hole in the top of the wiper arm.

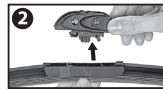
To determine the size of your Side Pin wiper arm, use a penny or ruler below to measure. A penny will fit firmly into the end of the 22mm wiper arm but will not fit into the end of the 17mm wiper arm.



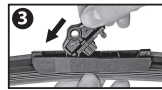
SIDE PIN (22mm)



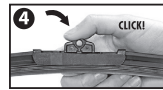
1. Lift up the back of the pre-attached adapter.



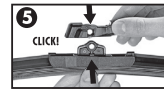
2. Pull out adapter to remove and discard.



3. Install the "M" adapter by aligning the arrow on the adapter with the arrow on the base of the wiper blade.



4. Snap the adapter down in the back to engage onto the base.



5. Attach the "B" adapter onto the "M" adapter.



6. With the blade upside down, insert the wiper arm pin into the hole in the center of the adapter.

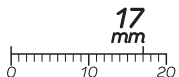


7. Rotate the blade up until the bent end of the metal tab of the wiper arm straddles the adapter, locking it in place.

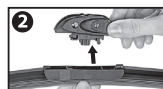
To determine the size of your Side Pin wiper arm, use a penny or ruler below to measure. A penny will fit firmly into the end of the 22mm wiper arm but will not fit into the end of the 17mm wiper arm.



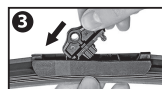
SIDE PIN (17mm)



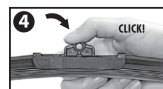
1. Lift up the back of the pre-attached adapter.



2. Pull out adapter to remove and discard.



3. Install the "M" adapter by aligning the arrow on the adapter with the arrow on the base of the wiper blade.



4. Snap the adapter down in the back to engage onto the base.



5. Attach the "A" adapter onto the "M" adapter.



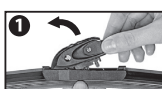
6. With the blade upside down, insert the wiper arm pin into the hole in the center of the adapter.



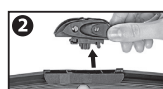
7. Rotate the blade up until the bent end of the metal tab of the wiper arm straddles the adapter, locking it in place.



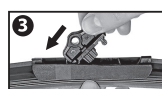
PINCH TAB BUTTON



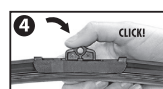
1. Lift up the back of the pre-attached adapter.



2. Pull out adapter to remove and discard.



3. Install the "M" adapter by aligning the arrow on the adapter with the arrow on the base of the wiper blade.



4. Snap the adapter down in the back to engage onto the base.



5. Attach the "A" adapter onto the "M" adapter.



6. Insert the tip of the wiper arm into the front of the adapter.



7. Rotate the blade up into the wiper arm until the tabs in the back of the adapter and the button in the middle of the adapter lock into the wiper arm.

PRODUCT QUESTIONS OR COMMENTS CONTACT TECHNICAL SUPPORT:

(800) 477-5847 • owitech@owi.com